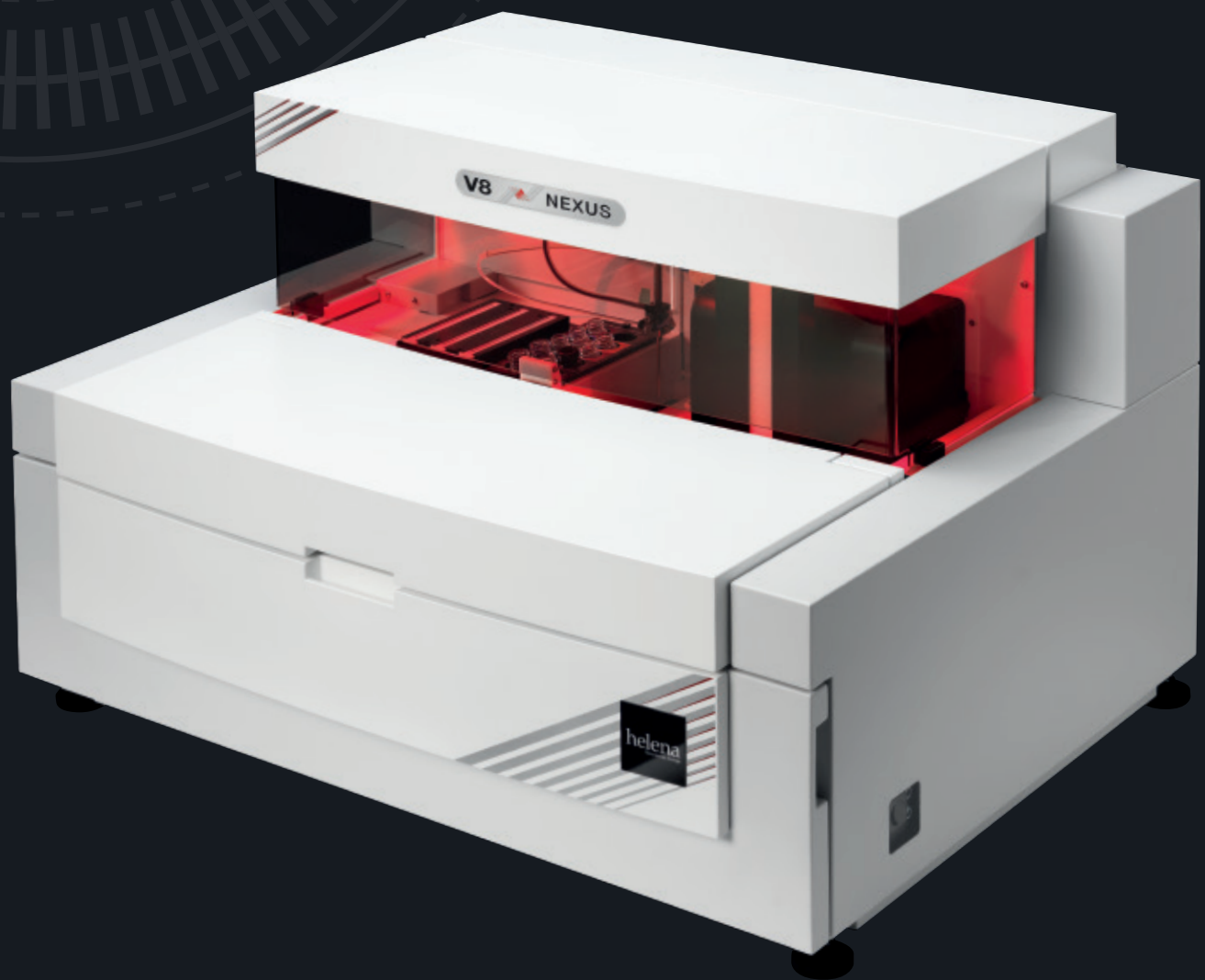


# V8 NEXUS

High Performance Clinical Capillary Electrophoresis

helena  
Biosciences Europe



> Automated > Intelligent > Connected

# High speed automation.

96  
tests/hr

Serum Proteins

96  
tests/hr

Urine Proteins

19  
tests/hr

Immunodisplacement

16  
tests/hr

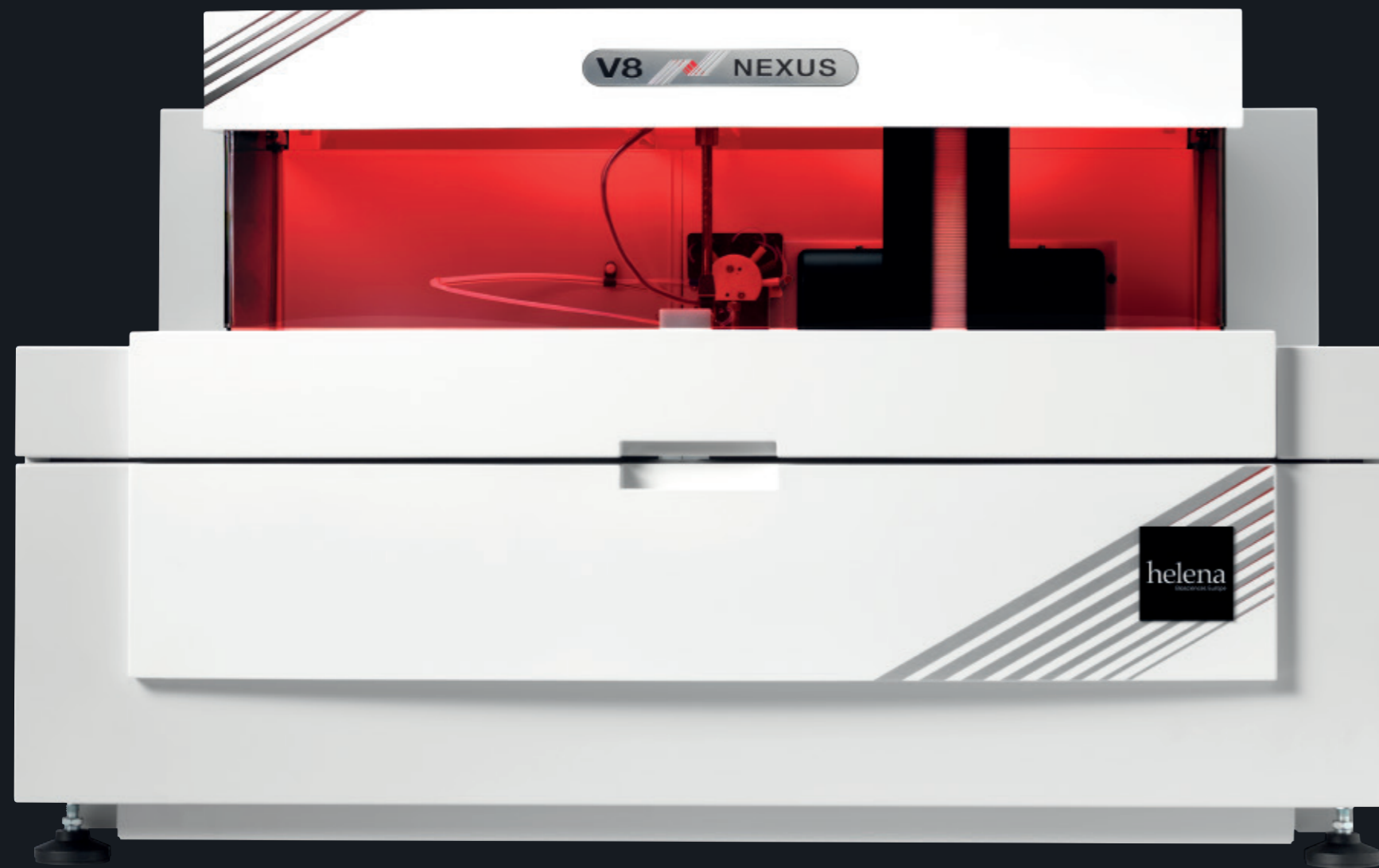
CDT

32  
tests/hr

Haemoglobin A1c

32  
tests/hr

Haemoglobin IEF



## Pioneering state-of-the-art laboratory diagnostics

### > Ultra sensitive

Auto-reflex for sensitive analysis of interfering factors and contrast media

### > Multiplexing

Track or join V8 Nexus systems together to meet high sample volumes

### > Haemoglobin automation

Integrated sample preparation for efficient whole-blood analysis

### > Touch response

Ultra-simple control and interpretation with touchscreen technology

### > Networking

Flexible integration tools for track, LIS, middleware and remote support

### > Intelligent control

Full patient sample monitoring and real-time system status



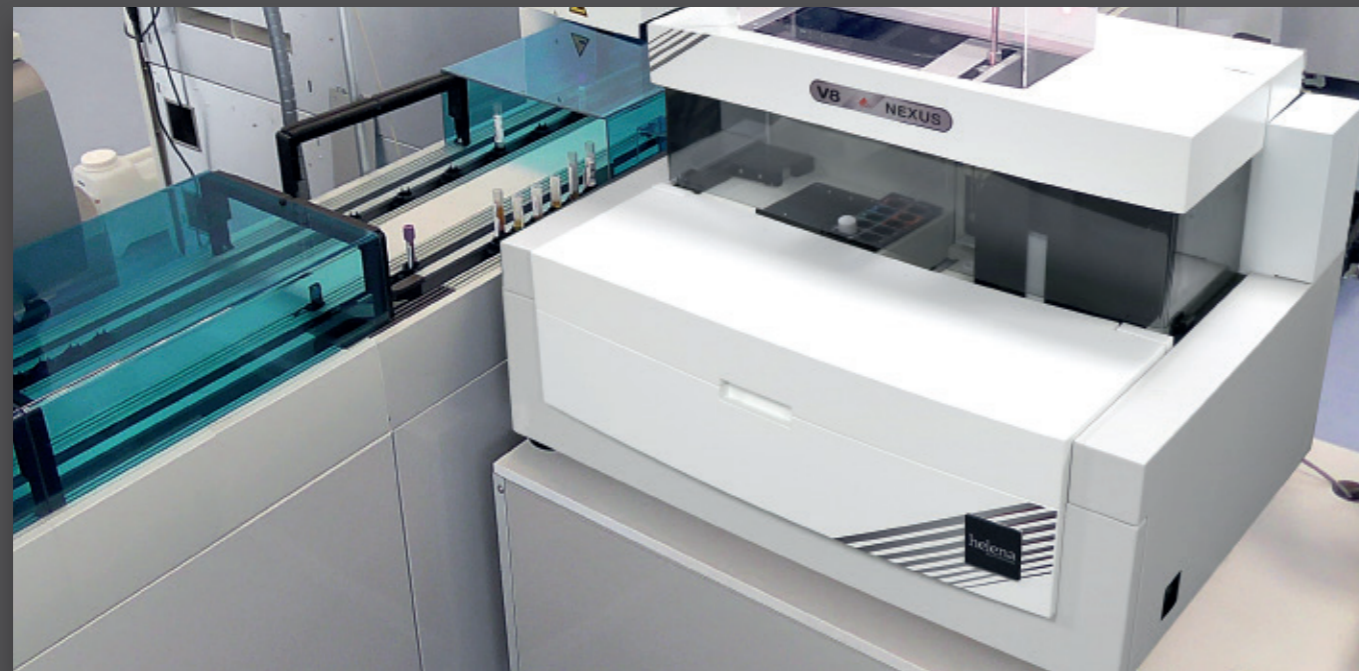
# Powerful, connected — it's the ideal partner.

V8 Nexus is redesigned from the inside out to deliver new automation, stunning performance and enhanced flexibility. With accelerated capillary technology, seamless connectivity to laboratory track systems and Helena's unique integrated gel workflow, no other system comes close to this level of power.

## LabConnect technology for high-throughput track connectivity

Capable of over 2300 SPE tests per day by connecting V8 Nexus to a laboratory track system. Platinum 5 will automatically return results with peaks identified and labelled, and is compatible with leading track systems:

- Inpeco FlexLab™
- Abbott Accelerator™
- Siemens Aptio™

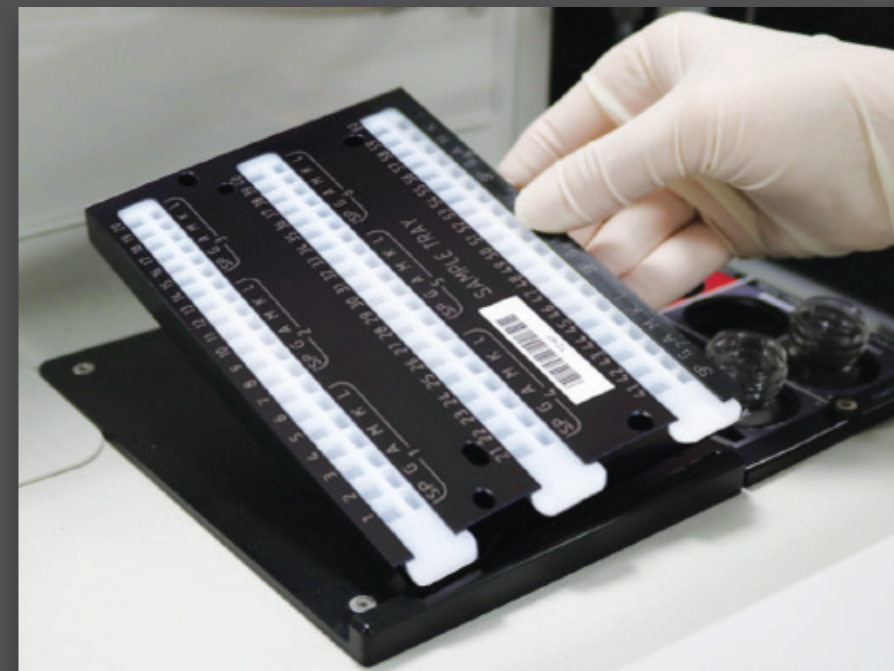


V8 Nexus shown connected to an Inpeco FlexLab track

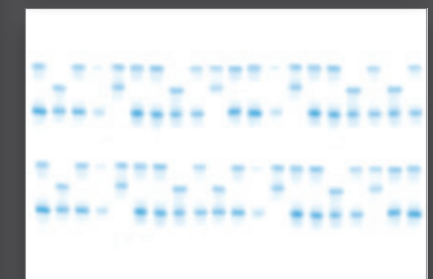
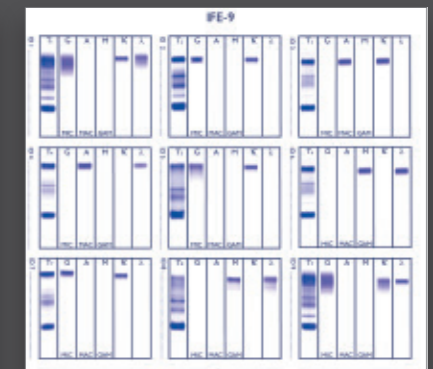
## Gel Integration for the complete analytical picture

V8 Nexus provides the unique ability to prepare sample trays for gel electrophoresis testing and confirmation, with automated dilutions and complete end-to-end patient ID and reagent traceability.

- Serum and Urine Proteins (up to 100 samples)
- Immunofixation (up to 15 serum and urine samples)
- Alkaline and Acid Haemoglobin (up to 40 samples)
- Automated pre-lysis for whole-blood haemoglobin



SAS-3 Gel tray



SAS-3 IFE (top), Alkaline Haemoglobin (bottom)



### Flexible sample handling

V8 Nexus supports the continuous loading of 112 sample tubes at a time, with random-access ordering and retrieval of samples for completely automated priority and reflex testing.



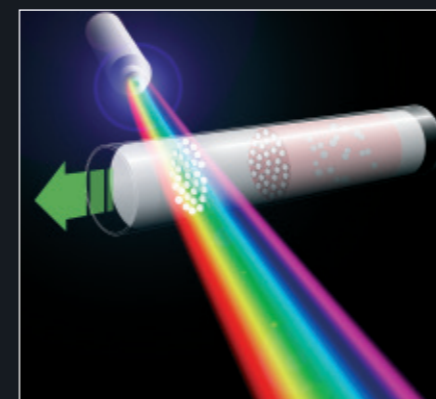
### 6 user-defined buffers

V8 Nexus delivers true flexibility, allowing you to use differing or duplicate buffers as needed. The system tracks lot information via barcode, efficiently switching between buffers automatically.



### Complete chemistry

With 10 temperature-controlled reagent positions, V8 Nexus can prepare up to 668 gel SP tests as well as gel IFE and Haemoglobins, with user or auto-dilutions based on monoclonal or polyclonal size.



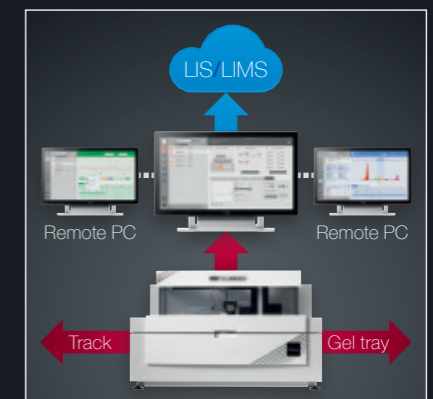
### FlexWave capillary technology

This unique capability provides a variable wavelength detection range of 200-600nm, enabling reflex testing for contrast media and screening for interfering factors, and support for new tests.



### Expert System

Intelligent software to streamline the interpretation process, allowing automatic reflex testing of abnormal results as required, whilst enabling the scientist to prioritise more ambiguous results.



### Networked interpretation

Platinum 5 supports real-time editing of results from across your network. It automates LIMS host-query and reporting, with a complete audit trail for patient ID, gel and buffer/reagent lot data.



# Take complete control with Platinum 5 Touch

Platinum 5 Touch introduces a revolutionary and powerful new touch screen interface, designed to accelerate and simplify your workflow — whilst still offering access to the full analytical power of the software.

## 1 Page Bar

Platinum 5 Touch offers simple, logical access to just the tools you need, right when you need them. Simply tap the buttons to rapidly switch between each dedicated, task-specific workspace. Some of the icons also function as status indicators, for instant feedback.

## 2 Navigation List

Swipe through your work list easily, with powerful filtering and sorting controls to rapidly find the results you're looking for.

## 3 Patient Results

Each result offers a clear, at-a-glance status overview, highlighting important patient history, Expert System and database information.

## 4 Inspector

View and edit patient demographics and chemistry values, accelerate your reporting with our pre-built Comments Assistant, and automatically retrieve all historical patient data with a single tap.

## 5 One-Touch View Controls

Attach, select and overlay Immunodisplacement data, and display multiple traces in our innovative Grid and Overlay Views.

## 6 Result View

Taking advantage of the large HD touch screen, your data is shown in more detail than ever before. Select and compare multiple results, pinch to zoom in and out and perform rapid edits with simple gestures.





# Intelligent design for a faster, simpler workflow.

V8 Nexus and Platinum 5 are closely integrated to provide intelligent, assistive features to streamline the analytical and reporting process.

## Instant status and control of your V8 Nexus

Platinum 5 combines all management facilities into a single, at-a-glance overview of your analyser. Smart automated start-up and shut-down together with proactive maintenance procedures mean that your system will be ready and waiting when you arrive, and geared for maximum efficiency throughout the day.



### 1 State-of-the-art Quality Control package

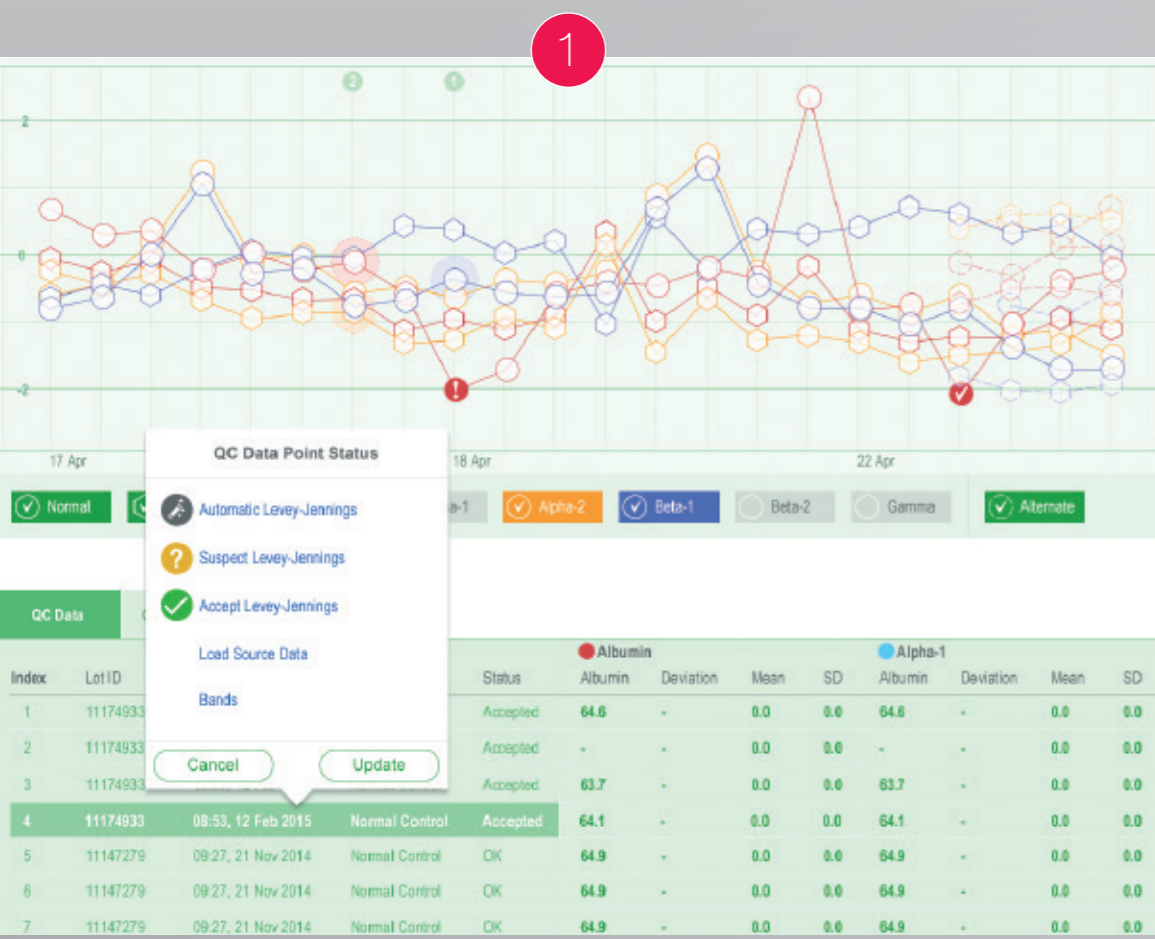
Platinum 5's quality control features include proactive alerting for failed or expired QC, comprehensive Levey-Jennings charting and statistical reporting tools to track quality control performance, and the convenient input of control data simply by scanning your assay sheet bar code.

### 2 Intelligent, user-friendly interpretation tools

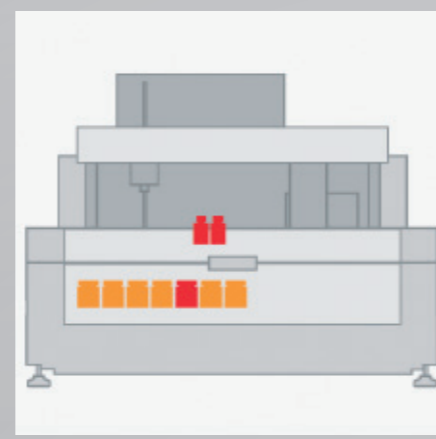
Platinum 5 makes interpretation and diagnosis quicker, easier and more reliable with a range of sophisticated viewing and editing capabilities, including our innovative Second Derivative tool which allows the operator to see small peaks or other features which could otherwise be missed.

### 3 Automatic data retrieval and comparison

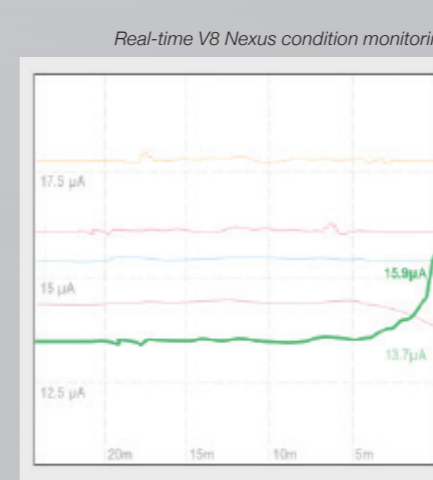
Perform detailed comparison of Serum Protein results alongside Immunodisplacements or historical patient data. Platinum 5 allows you to compare any live or archived data, to get a true picture of the patient's progression. Search across databases for practically unlimited capacity.



Platinum 5 Touch QC tools



Instant V8 Nexus status display



Immunodisplacement comparison



3

Colour-coded result status previews

	☆	ASPE:spe
	<b>Ashley Thompson</b>	22348576 ASPE:spe
	<b>Peter Burnley</b>	56740578 ASPE:spe
	<b>Eileen Johns</b>	11089713 ASPE:spe
	<b>Arch Stanton</b>	64245722 ASPE:spe
	<b>Alastair Stewart</b>	90421005 ASPE:spe
	<b>Mary Timms-Fewster</b>	22348576

Passed

Analyser Buffer Status

Arthur Derrill	05427010	ASPE:spe
Margaret Heale	01160576	ASPE:spe
Scott Middleton	11204514	ASPE:spe
Richard Proctor	13322084	ASPE:spe
Ashley Thompson	22348576	ASPE:spe

QC status indicator

Instant analysis progress

Consumable levels

# Ordering information

## V8 Nexus 8-channel analyser



V8 Nexus is available as a standard configuration supporting all existing V8 tests, or you can upgrade your Nexus capillary system to support the Fast SP test with the Fast SP Upgrade Kit (800010).

Cat. No.	Description
<b>800008</b>	<b>V8</b> V8 Nexus (220V) including Platinum 5 Standard Edition, LCD monitor and PC
<b>800018</b>	<b>V8</b> V8 Nexus (110V) including Platinum 5 Standard Edition, LCD monitor and PC
<b>800010</b>	<b>V8</b> Fast Serum Protein Upgrade Kit allowing 96 SP tests per hour

## Platinum 5 analytical software



Platinum 5 is 64-bit Windows software, available either in basic form or supporting the new touchscreen-compatible user interface.

Cat. No.	Description
<b>400500</b>	<b>Platinum Software — Platinum 5 Standard Edition</b> Basic Platinum interface
<b>400501</b>	<b>Platinum Software — Platinum 5 Touch Edition</b> Requires Platinum 5 Standard Edition, touchscreen and 64-bit Windows 10 PC
<b>400502</b>	<b>Platinum Software — Platinum 5 Plus Pack</b> Expert System, Networking and FlexLab connectivity (requires Platinum 5)
<b>400591</b>	<b>High-Definition LCD Touchscreen</b> Requires Platinum 5 Standard Edition and 64-bit Windows 10 PC
<b>400592</b>	<b>64-bit Windows 10 PC</b>
<b>400593</b>	<b>Transparency Scanner</b>

## SAS semi-automated gel analyser systems

Extend the V8 Nexus workflow with Helena Biosciences' gel electrophoresis method portfolio, including low and high throughput Immunofixation and Haemoglobin tests.



**1531: SAS-1 Plus**

Suitable for low-to-medium throughputs



**1212: SAS-2**



**1527: SAS-3**

Suitable for medium-to-high throughputs



**1529: SAS-4**

**Tel** +44 (0)191 482 8440  
**Fax** +44 (0)191 482 8442  
**sales@helena-biosciences.com**

HL-2-2478P 2016/09 (3)

Queensway South,  
Team Valley Trading Estate, Gateshead,  
Tyne and Wear, NE11 0SD, United Kingdom

© 2016 Helena Biosciences. All rights reserved.

**helena**  
Biosciences Europe

[www.helena-biosciences.com](http://www.helena-biosciences.com)